

A NEW CHAPTER BEGINS



**DISCOVER
LANSDALE**

PUTTING LANSDALE ON THE MAP,
ONE EVENT AT A TIME

 **discoverlansdale**

www.DISCOVERLANSDALE.ORG

LANSDALE FREIGHT STATION



DISCOVER LANSDALE

PUTTING LANSDALE ON THE MAP, ONE EVENT AT A TIME





DISCOVER LANSDALE

PUTTING LANSDALE ON THE MAP,
ONE EVENT AT A TIME

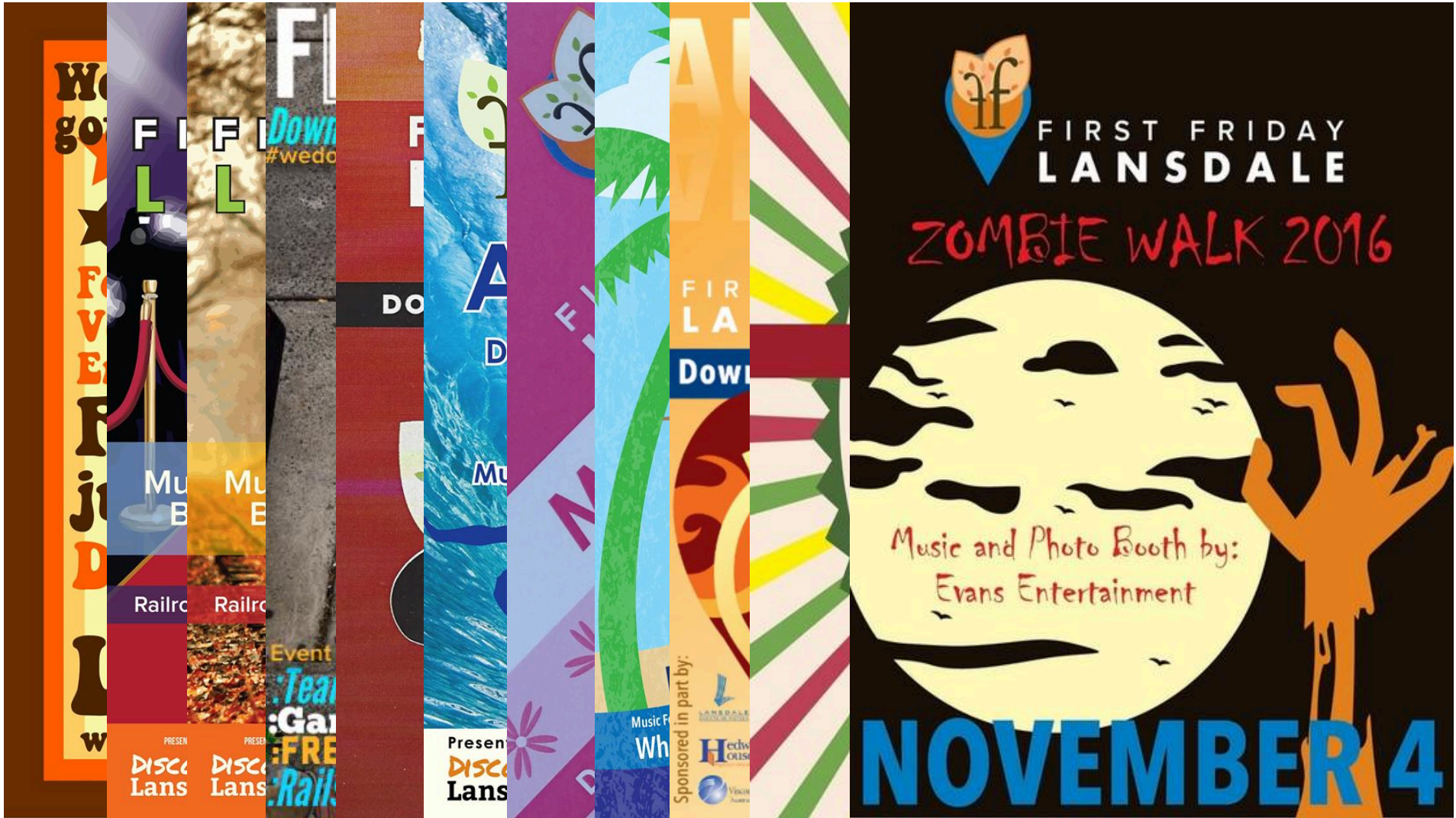
BUSINESS DIRECTORY

2016 Edition



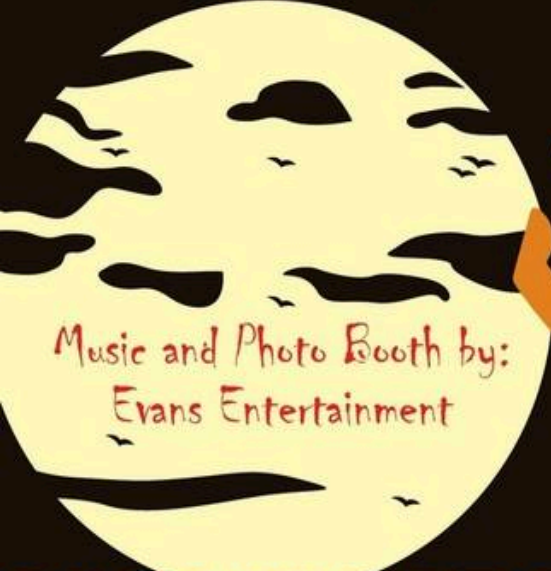
CHECK OUT
SOME OF
THE BEST
THAT LANSDALE
HAS TO OFFER!





FIRST FRIDAY
LANS DALE

ZOMBIE WALK 2016



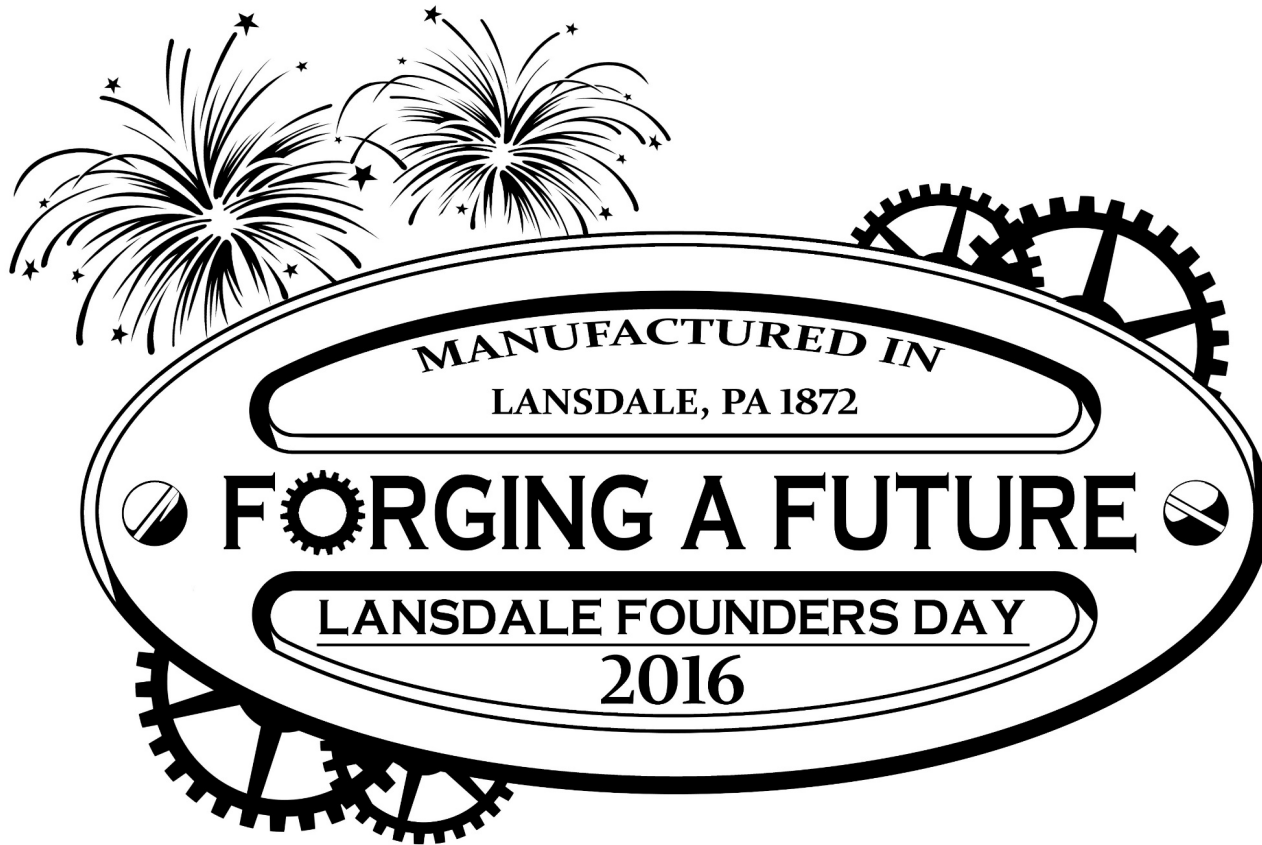
Music and Photo Booth by:
Evans Entertainment

NOVEMBER 4

PRESENTED BY
DISCO
Lans

PRESENTED BY
DISCO
Lans

Sponsored in part by:
Music F...
Wh...
LANSDALE
Hedw...
ous...
Vicer...
Austral...



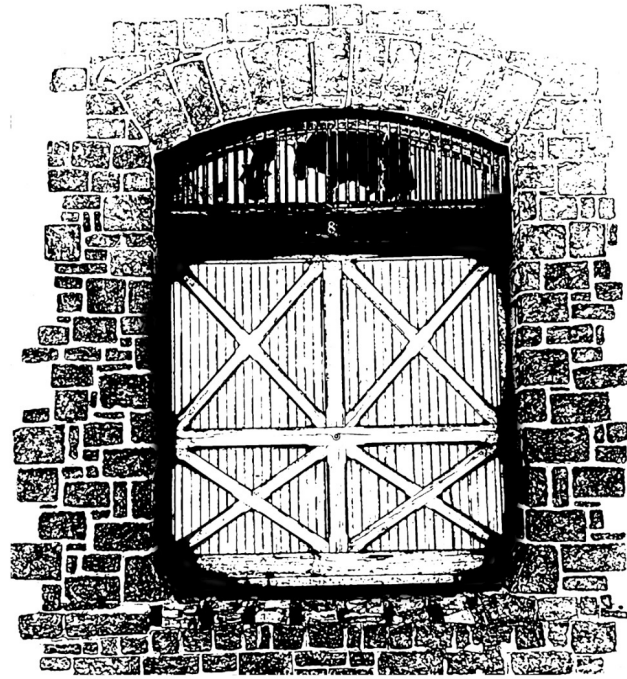
MANUFACTURED IN
LANSDALE, PA 1872

FORGING A FUTURE

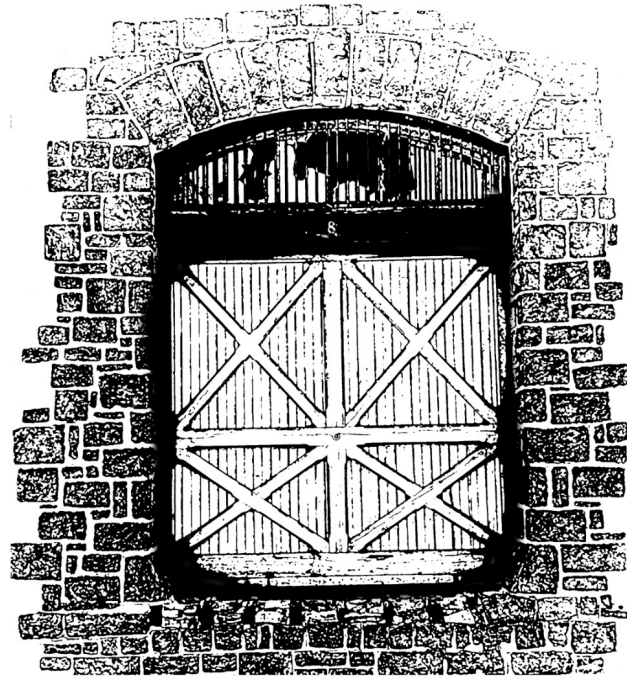
LANSDALE FOUNDERS DAY
2016



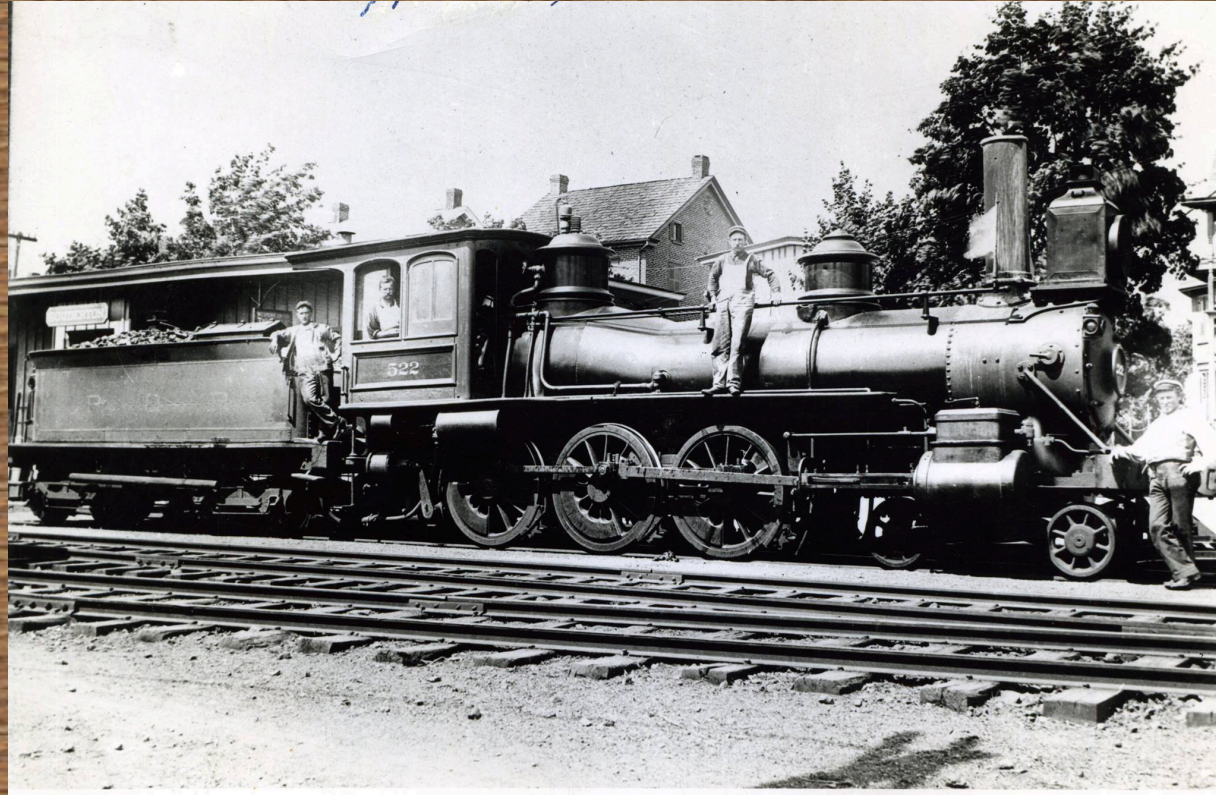
©Discover Lansdale

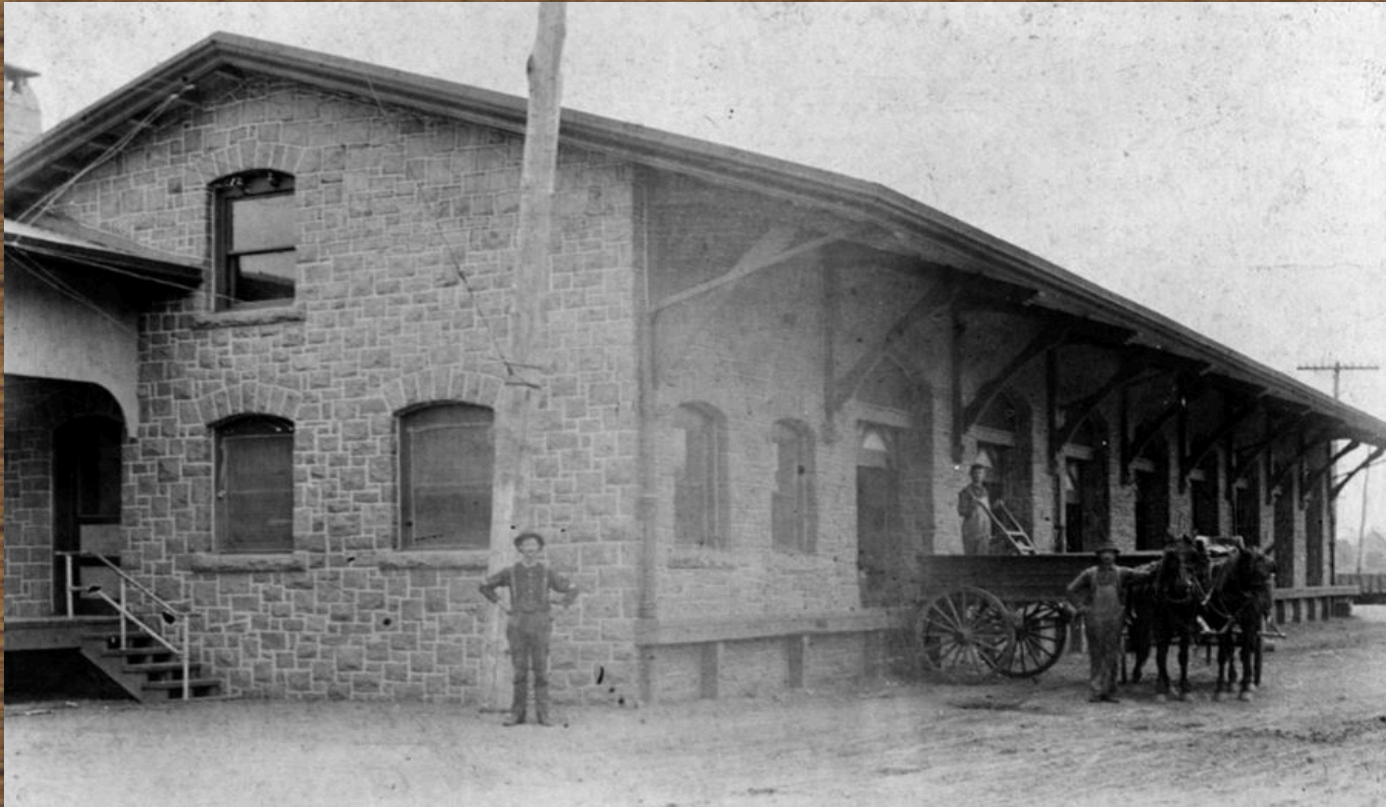


Purchase of Station



First A Little History





LANSDALE FREIGHT STATION



LANSDALE PASSENGER STATION







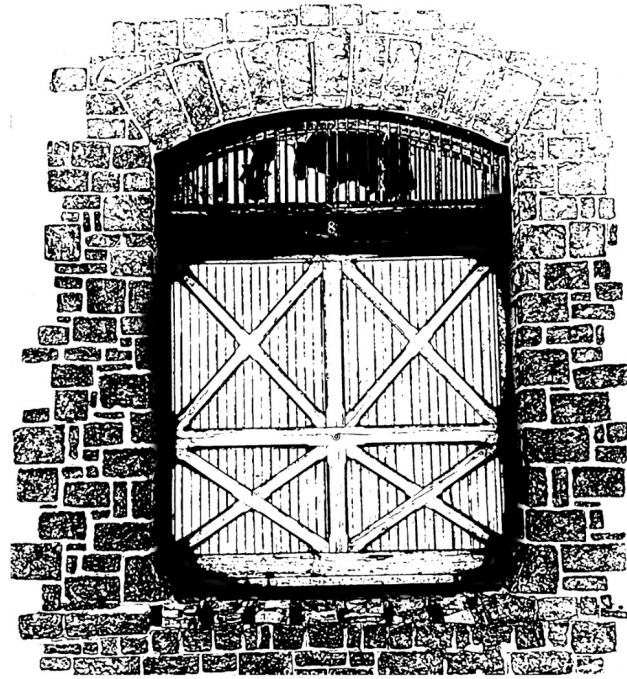


Ignored for many years









Current Condition





Underflooring and joists rotted in sections inside





Exposed joists at freight doors



Front door: Missing glass, misaligned



Lack of secondary exit



Original ceiling rafters and roof joists



Transom windows broken, frame in poor condition



Windows boarded up, in poor shape



Missing freight
doors with
broken framing





Overgrown
vegetation

Original stonework with ribbon-cut pointing



Existing
freight
crane



Lansdale Freight Station Stairs



Old Stairs, before

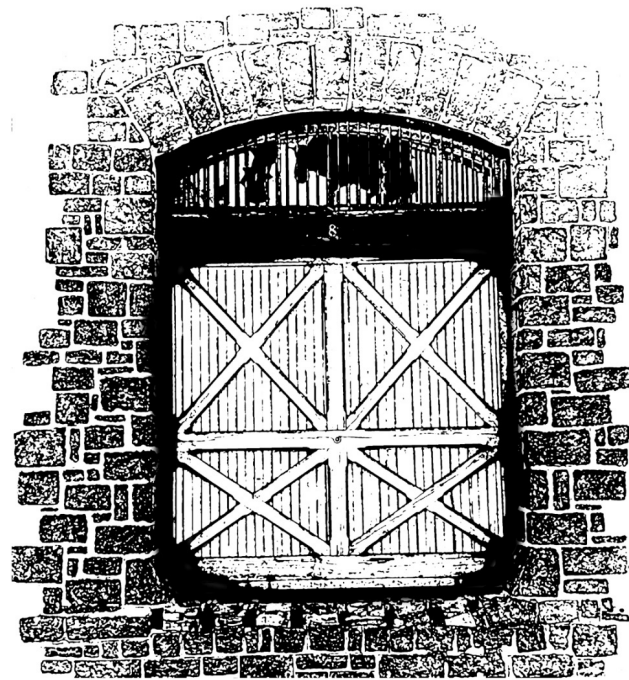


New Stairs, after



- **4' x 4' concrete landing pad**
 - 4" crushed stone base
 - 4" concrete
- **New Step Stringers with solid step treads**
- **New step railings with 2" grab railing**
- **28' new railing**
 - 4x4 posts bolted to deck framing
 - 2x4 railing cross framing
 - solid plywood facing
- **Additional (2) 4x4 support posts to existing framing for additional support**

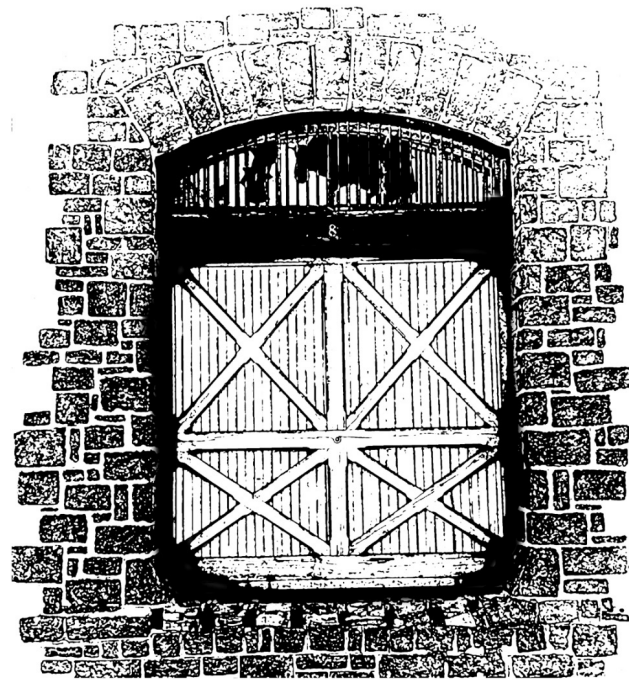
August 2016



Immediate Needs

Weather-proofing for winter

- **Cover transom windows**
- **Repair two holes in roof**
- **Repair, realign front door; new glass**



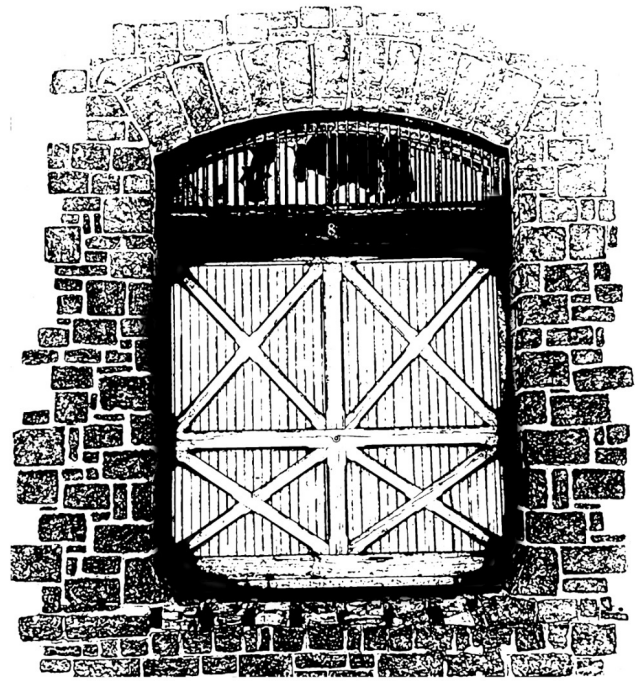
Rehab, Next Steps

Repair and Replace

- **Flooring: Remove concrete overlay**
- **Floor joists: Replace or repair**
- **Flooring: Restore or replace tongue and groove**
- **Transom windows (wood or aluminum framing)**
- **Freight doors: Salvage parts from rear doors to make front 3-4 operable**
- **Add ramps and permanent stairways front and back (ADA)**
- **Local contractors**

Additions and Improvements

- Heating/Air conditioning
- Electrical Service
- Plumbing
- Restrooms
- Second-Floor Restoration
 - Discover Lansdale administration office space & storage



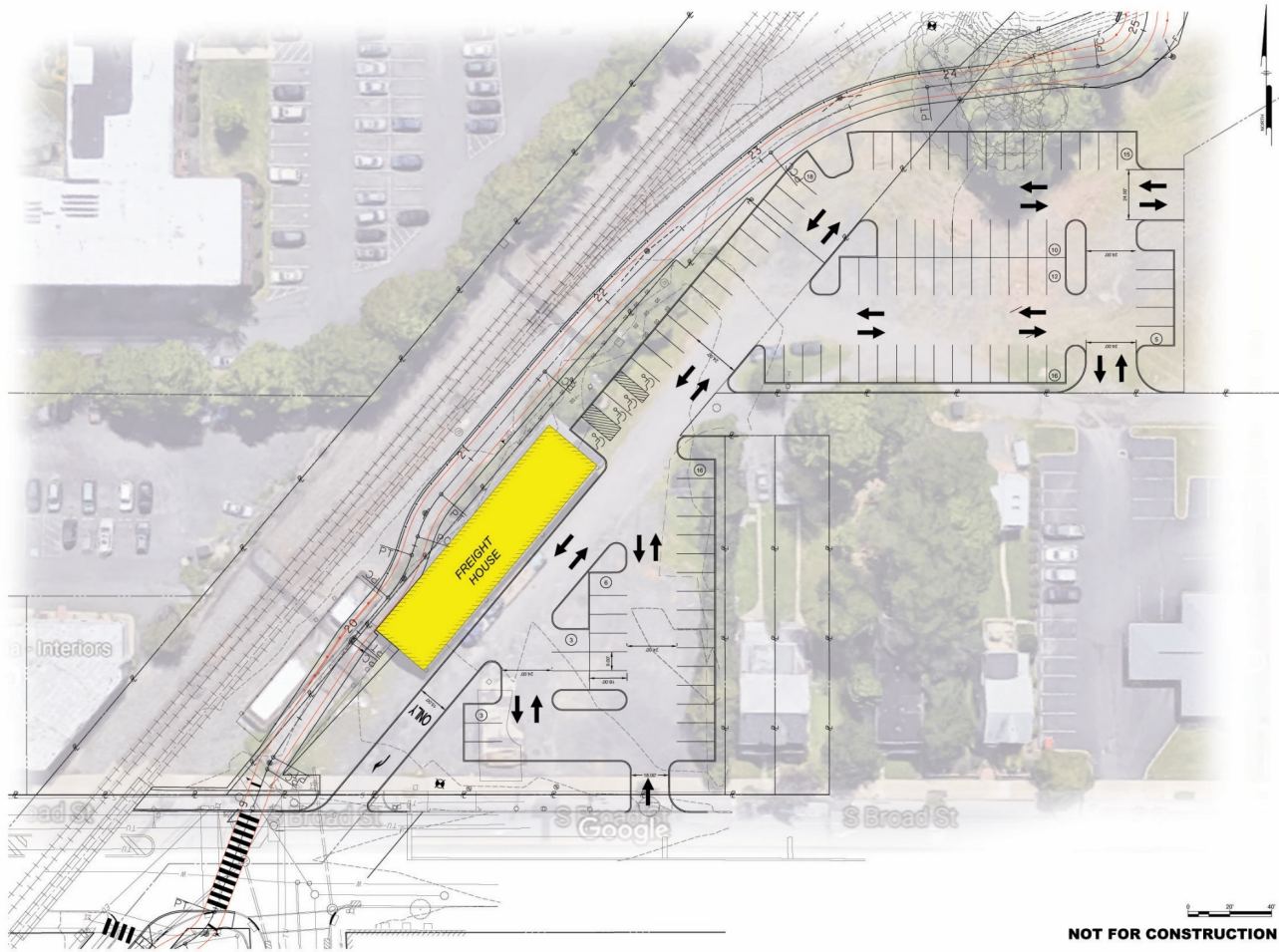
Possibilities

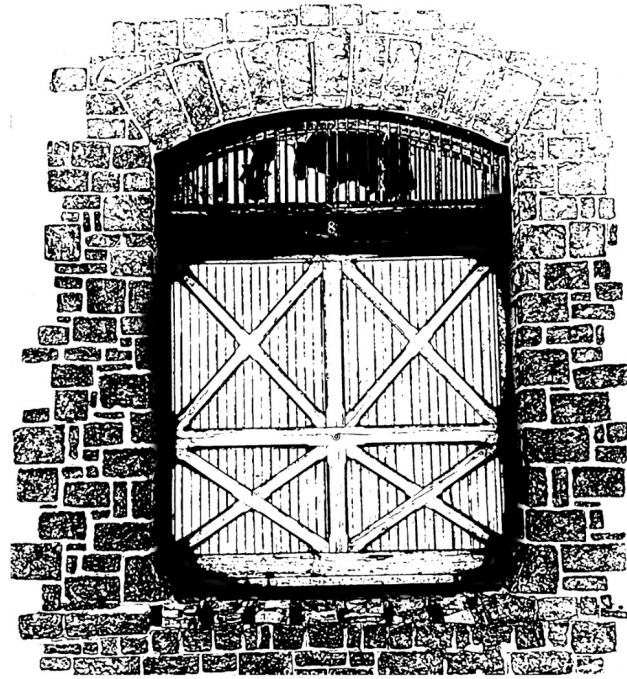
Potential Goals

- **Lansdale Welcome Center**
- **Historical displays (borough and railroad)**
- **Tie-in with Reading Railroad Museum**
- **Displays along walls**
- **Kitchen facilities**

Potential Uses

- Revenues ultimately intended to cover maintenances and expenses
- No continuous commercial uses (historical limitations)
- Multipurpose community center
- Meetings: Service organizations, historical society, scouts . . .
- Corporate and private parties, etc.
- Receptions, fundraisers, weddings, art shows . . .
- Markets and sales; craft shows
- Civic events: Inclement weather First Fridays, Halloween “*Fright Station*”





Comments and Ideas