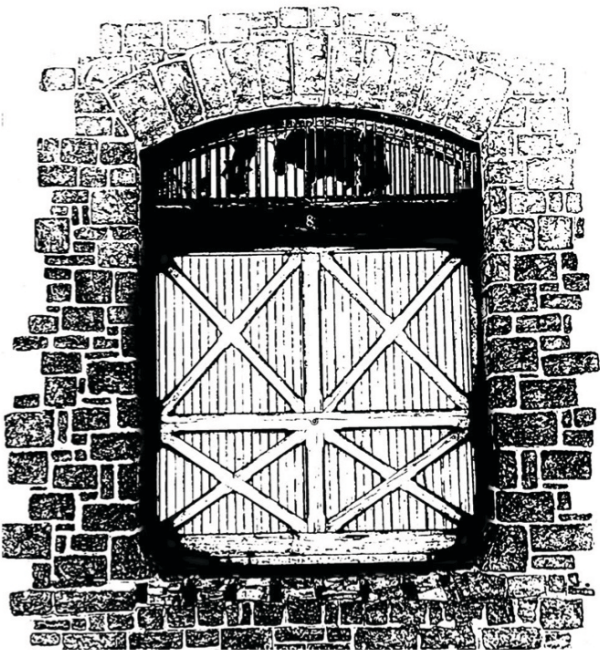


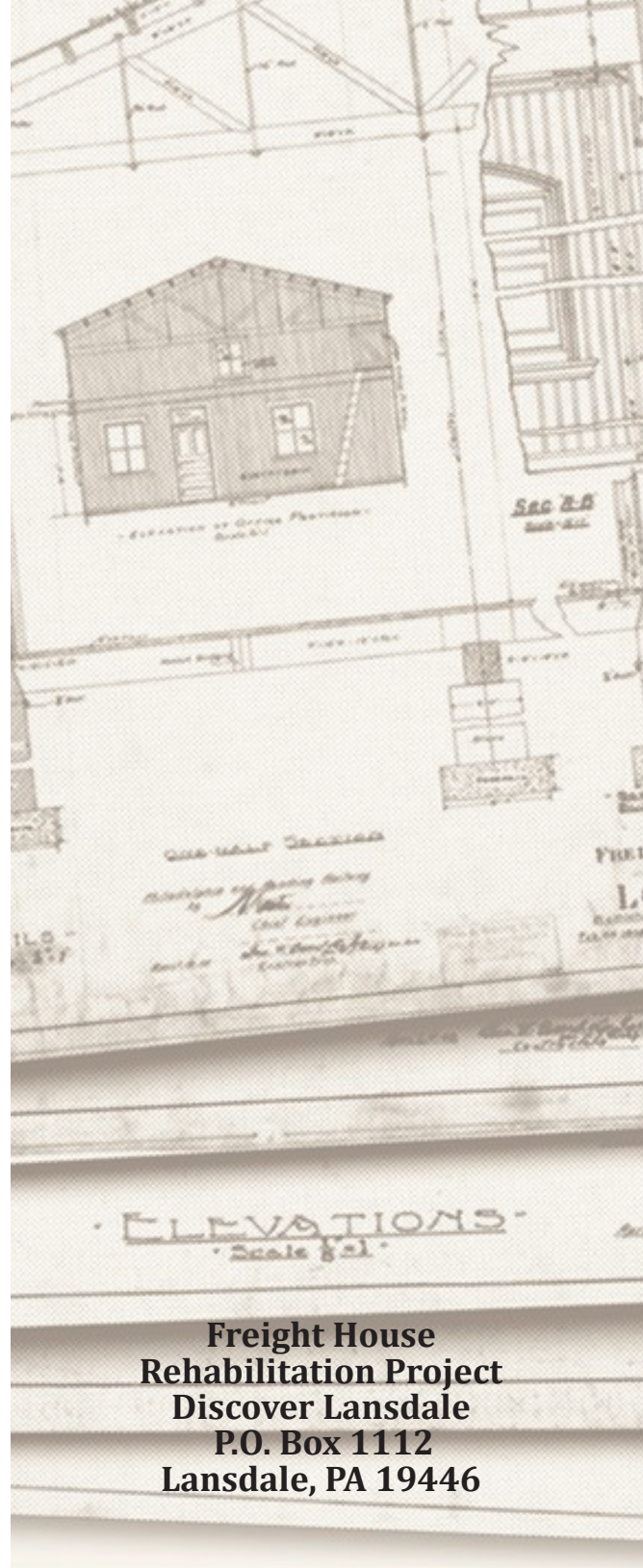
## Transforming an iconic structure into a community resource:

- A **unique venue** for the community for pop-up markets and gardens, civic events, receptions, parties, meetings and celebrations.
- **Exhibits from Lansdale Historical Society** reflecting the Borough's industrial heritage.
- **Welcome Center for newcomers** and visitors to Lansdale Borough along the Liberty Bell Trail, with public parking and guides to the Borough's many restaurants and attractions.

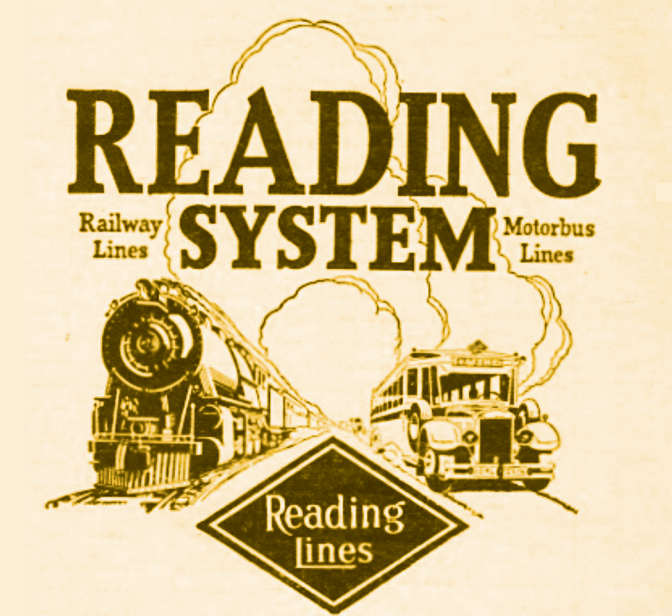


 [facebook.com/  
discoverlansdalePA](https://www.facebook.com/discoverlansdalePA)

[www.discoverlansdale.org](http://www.discoverlansdale.org)



Freight House  
Rehabilitation Project  
Discover Lansdale  
P.O. Box 1112  
Lansdale, PA 19446



## Lansdale's Historic Freight House Rehabilitation Project

S. Broad & Vine Streets  
at the Rail Crossing  
and the Liberty Bell Trail

Preserving the significance  
of the railway to Lansdale  
Borough's establishment  
and growth.

A project of





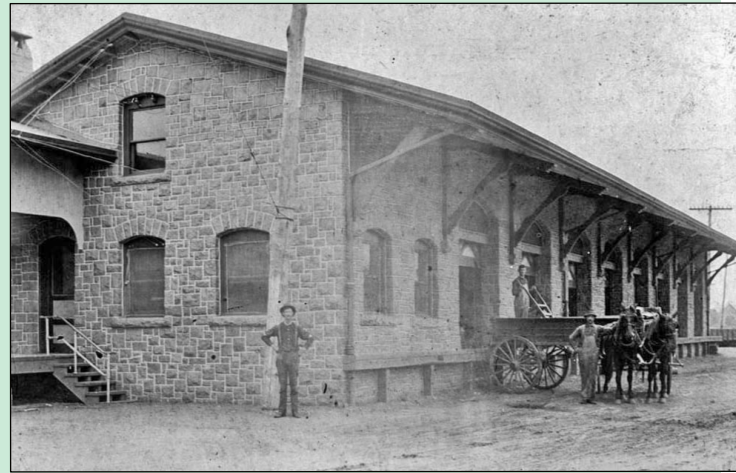
## Rehabilitating Lansdale's transportation treasure

This historic building was built in 1902, as the town's shipping hub. After sitting idle for decades, it was saved from the wrecking ball by Discover Lansdale in 2016.

With the help of a dedicated group of volunteers, we cleared the area of trash and vegetation, remove the rotted flooring and joists. We've also repaired the deteriorating stone work along the Freight House trail side.

Now, through grants from the Pennsylvania Historical and Museum Commission, the state Rehabilitation Assistance Capital Program, and the Delaware Valley Regional Planning Commission's Regional Trails Program, we are preparing to rehabilitate this stately stone structure as a Welcome Center for visitors and a venue for events both civic and private.

Thank you to Pa. Rep. Steve Malagari, state Sen. Maria Collett, and to our many friends and neighbors who generously donated time, passion and funds to this project.



## The tasks at hand

We have much work to do to prepare the historic Freight House for its future:

- Replacing floor joists, installing new subfloor and flooring.
- Adding mezzanine, storage areas, restrooms, exterior and interior stairs and ramps
- Rehabilitating transoms, entry doors and freight doors (including three to operating condition).
- Installing electric service, plumbing, heating and air condition systems.
- Adding lighting fixtures, interior and exterior, and fire detection systems.
- Repairing stonework and pointing, timbers, gutters and downspouts.
- Paneling, trimwork and painting.
- Adding historical display areas, for Lansdale's industrial heritage. Furnishing and finishing Welcome Center area.



## Won't you join us?

Use this form, visit our website, or simply scan this QR code to learn more about Discover Lansdale's Historic Freight House Rehabilitation Project and how you can help:



## Donate or sponsor

While the grants will cover much of the renovations, we will still need community support to complete this project. All gifts are gratefully appreciated. If you can, make a tax-deductible<sup>1</sup> donation to Discover Lansdale, a nonprofit 501(c)3 civic improvement organization.

Or if your group or company is interested, please ask us about sponsor opportunities at the Freight House project by writing:

[info@discoverlansdale.org](mailto:info@discoverlansdale.org)

## Stay in touch

Keep up with the latest news about the Freight House, and find volunteer opportunities for the project, by visiting [discoverlansdale.org/freight-house.html](http://discoverlansdale.org/freight-house.html), or by sending us your contact info below:

Name \_\_\_\_\_

Email \_\_\_\_\_

Address \_\_\_\_\_

<sup>1</sup> — Your monetary donations may be deductible depending on your specific tax situation; please consult your financial advisor. Please make checks payable to Discover Lansdale; specify "Freight House donation" in memo field